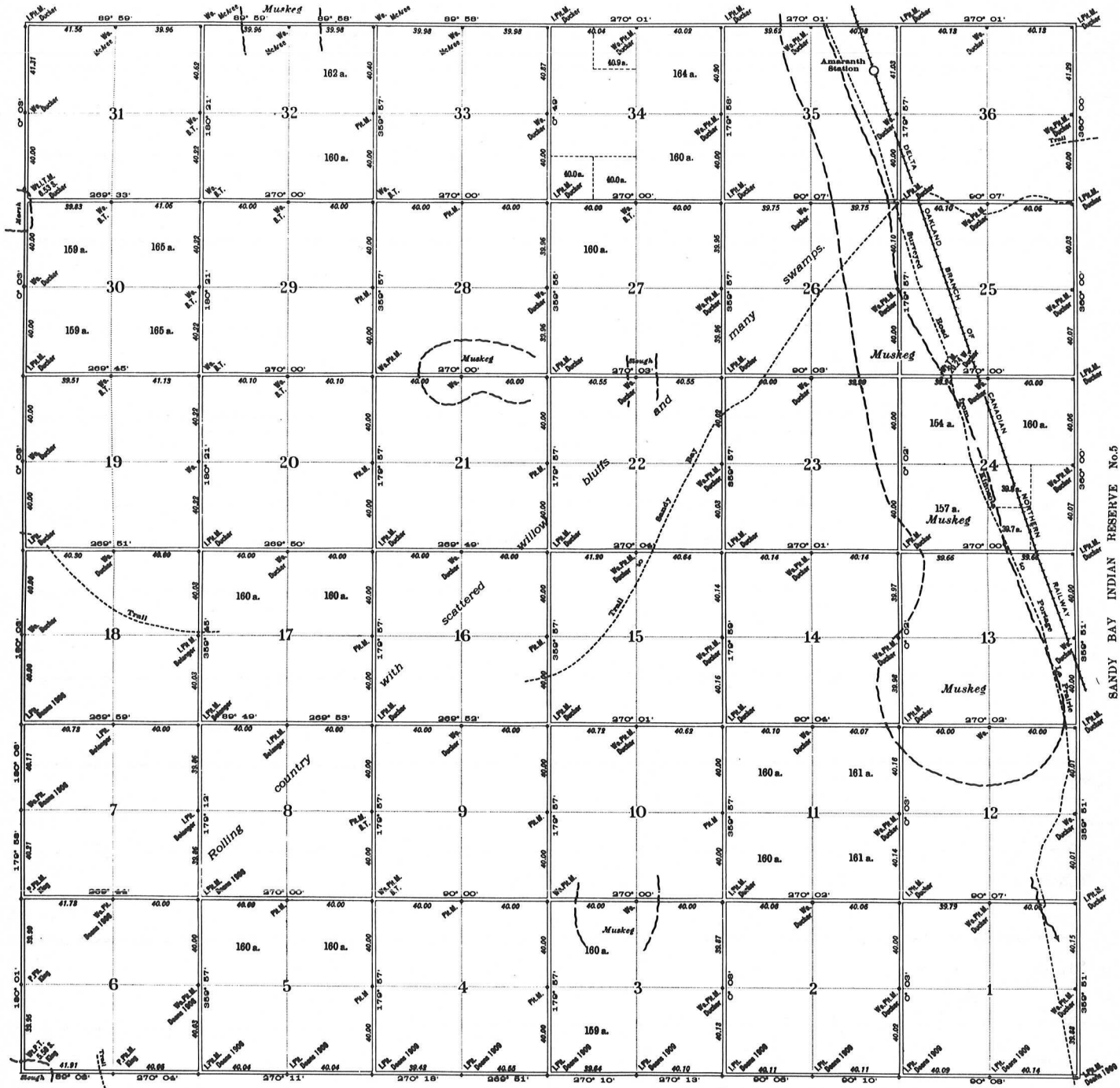


Plan of Township 18, Range 10, West of the Principal Meridian

SIXTH EDITION

SCALE 40 CHAINS TO AN INCH



PHOTOZINCOPRATED AT THE SURVEYOR GENERAL'S OFFICE, OTTAWA, CANADA

Compiled from official surveys by

- C. P. Brown D.L.S. 29th August 1873
- J. McAree D.T.S. 13th September 1889
- W. A. Ducker D.L.S. 14th October 1902
- W. J. Deans D.L.S. 9th October 1906
- W. J. Deans D.L.S. 23rd October 1909
- P. R. A. Belanger D.L.S. 22nd October 1910
- G. A. Bennett D.L.S. 18th July 1912
- J. A. S. King D.L.S. 18th October 1916

NOTE: The subdivisions of quarter-sections shown upon this plan are legal subdivisions. Distances are in chains. Bearings are reckoned from the astronomical meridian through the centre of the township. Areas in acres are marked on all lands surveyed, except lands that have been patented. The name at a monument is that of the surveyor who erected or restored the monument. All monuments not so designated were erected by C. P. Brown.

P. stands for standard post; I. for old pattern iron post; Wo. for wooden post; Pt. for four pits; M. for mound; Wt. for witness; T. for trench; B. T. for bearing tree.

13	14	15	16
12	11	10	9
8	7	6	5
4	3	2	1

Legal Subdivisions in a Section

Department of the Interior, Ottawa, 15th August, 1918

Approved and Confirmed

E. Deville
Surveyor General.

Map courtesy of National Archives.