



Elkwood School 1954. Back Row, L to R: Marie Foster, Frances Foster, Peggy Robertson, Elsie Toms. Second Row, L to R: Bernadette Toms, Bernet Toms, Ronnie Ring, Donna Robertson, Ruby Robertson. Front Row, L to R: Wayne Ring, Mary Grimstead, Sylvia Grimstead.



Miss Floyd, teacher and Matt (Scottie) Lamberton.

August 10, 1916.

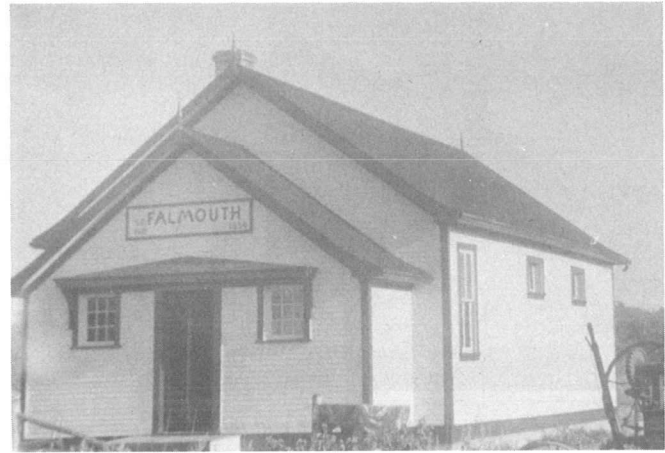
Elkwood School Auditors report.

To the Trustees of Elkwood S. D.

I have examined the accounts, vouchers, etc., of the above school district, and am satisfied of their correctness.

All information was readily given and every assistance given to enable me to declare the books to be well kept, the accounts in good order, and satisfactory in every particular.

(Signed) A. P. DAVIDSON,  
Auditor.



Falmouth School.

### FALMOUTH SCHOOL DISTRICT NO. 1856

submitted by Hazel Kittner and Elsie Baker

The school district of Falmouth No. 1856 was formed on February 13, 1917 by By-law 348 of the Rural Municipality of Westbourne. The school was built on Sec 34-18-11-2W and opened in the fall of 1917 with 10 boys and 12 girls registered. Mrs. T. Grove was the teacher and Ira Stratton was Trustee. In 1936 April 14th by Order of Council No 431/36 the district was readjusted and included in the Rural Municipality of Glenella No. 1006 in Ward 5. In the spring of 1925 the Ferguson School No. 1841 burned and the pupils went to Falmouth.

In 1937-38 a few pupils were transferred from Davey School No. 1735 to the Falmouth school but in 1938-41 the Falmouth pupils were bused to Amaranth school due to the low enrollment.

In 1942 several pupils from the Lone Spruce No. 1984 were transferred to the Falmouth school for a few years.

In 1962 August 26th the school was dissolved, sold to Matt Oswald and the pupils were transported and registered in the Amaranth School.

Teachers who taught in Falmouth School included the following:

1917-19-	Mrs. T. Grove
1919-20-	S. Crook
1920-21-	S. Crook and M. McCoughlin
1921-22-	M. McCoughlin, Ed Moffat and Bill Johnston
1922-23-	B. Johnston, R.A. Ruthledge and A.A. Sanford
1923-24-	A.A. Sanford and G.S. Guest
1924-25-	L.S. Dumeresq
1925-26-	Margaret Marshall
1926-27-	Margaret Marshall, A. McConnell
1927-28-	A. McConnell
1928-29-	F.M. Westwood, Ella Humphrey
1929-30-	W. Baty, E.M. Henders, W. Baty
1930-33-	L.A. Hamilton, Jean Henderson taught while he was ill
1933-34-	Charles Morden
1934-38-	Thomas McKay
1941-45-	Mrs. E. Gemmill
1945-48-	Mrs. Graffin
1948-49-	Phillip Herchak
1949-50-	Mrs. Abrey, L.E. Schmidt
1950-52-	Dona Johnson
1952-53-	Dona Johnson, Beatrice Fulton, Agnes Single
1953-54-	James Norrie
1954-55-	Joan Finnbogason
1955-57-	Mrs. Hlif Thompson
1957-59-	Leila Duffin
1959-60-	Helen Skrabek
1960-61-	Mrs. Oliver
1961-62-	Mrs. Meikle

During the 45 years the school was open there were approximately 238 pupils in attendance taking part or all of their education there. Listed by families:

Rhode- Olga and Leonard