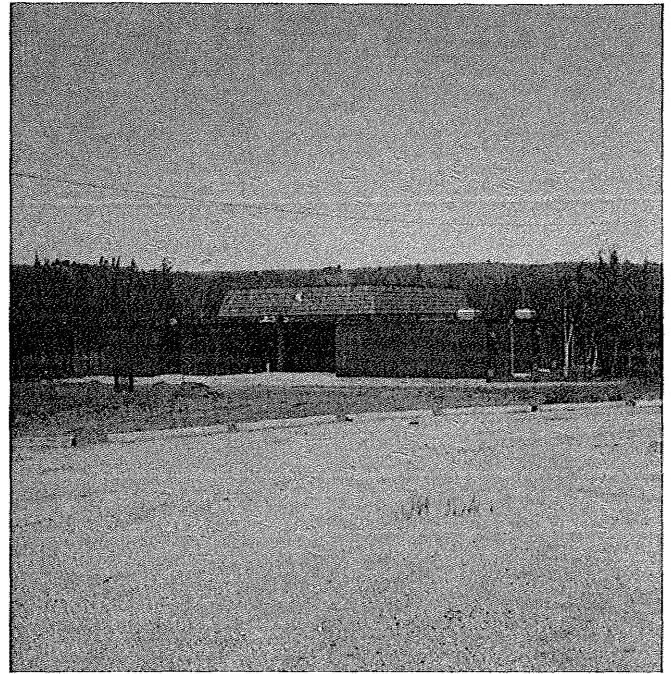




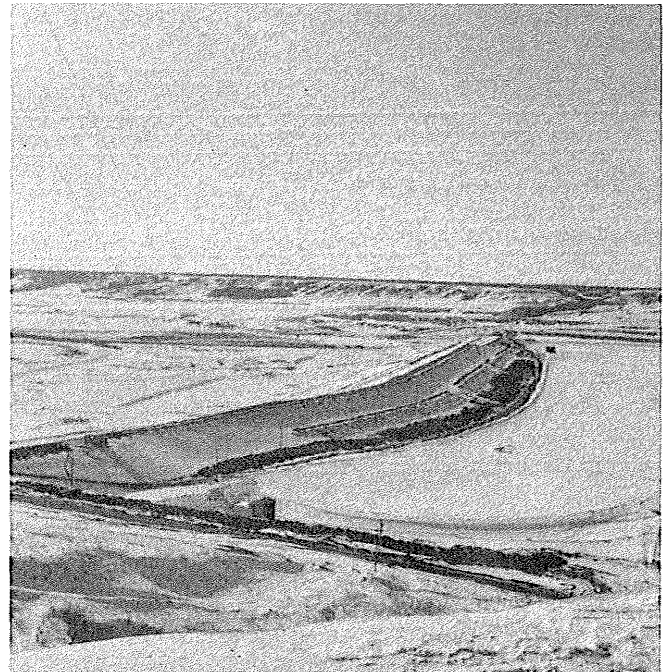
*Asessippi Provincial Park - Marina and entrance gates in the background.*



*The Pavilion at the park, a very busy spot all through the summer months serving delicious food to visitors and local residents.*



*The conduit at the Shellmouth Dam - the gates that control the flow of water to the river and the level of water in the Lake of the Prairies.*



*Shellmouth Dam and Lake of the Prairies in the winter - a very popular spot for ice fishing.*