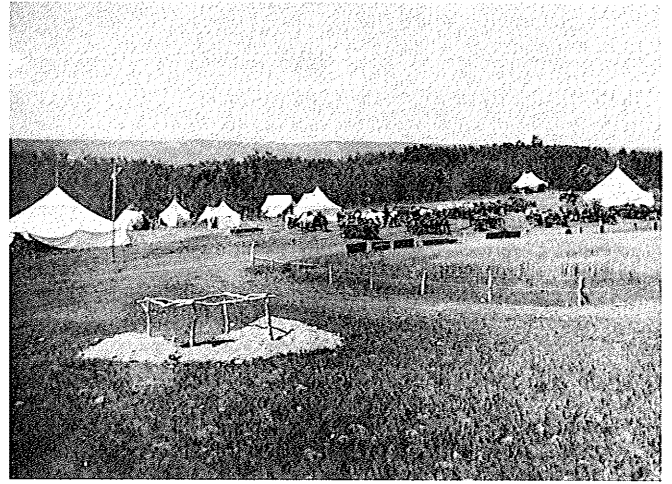




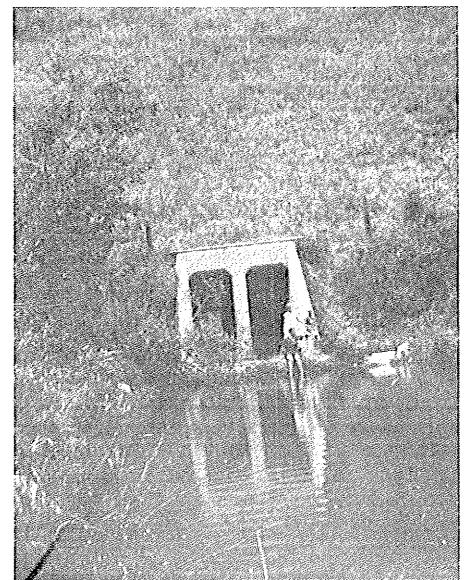
*Dining tent and cooks. (Courtesy Manitoba Archives) 1909.*



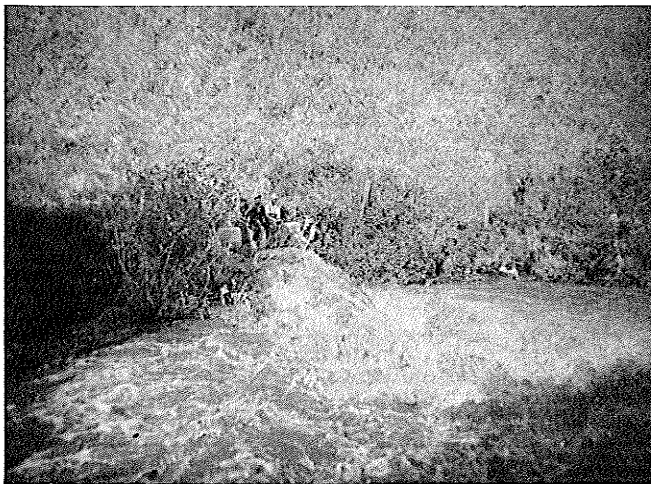
*Railway Camp: situated about two miles north of the Shellmouth Dam. (Courtesy Manitoba Archives) 1909.*



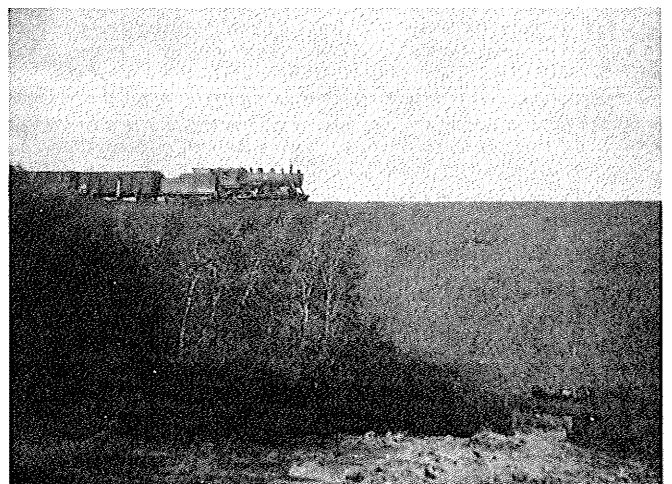
*Camp at Thunder Creek Trestle. Rails were laid and used for several years. (Courtesy Manitoba Archives) 1909.*



*Thunder Creek Trestle with cement culvert and earth filled.*



*Floodwater at the Thunder Creek Tunnel. 1946 - Danger of underground washouts.*



*Trestle, 1946. Flood. Trains met on either side. Passengers and freight were carried across to transfer trains.*