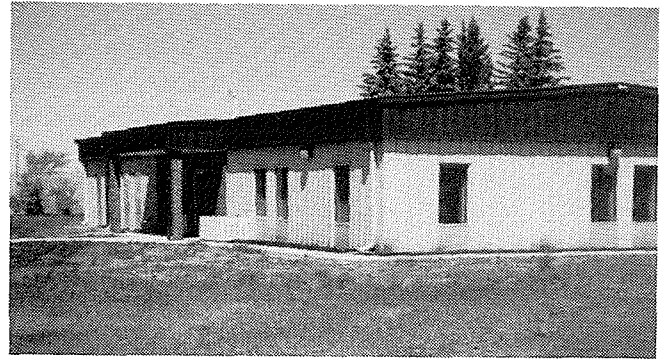


*The bell from the first Wellwood School on the Wellwood School Cairn.*

several more settlers and the difficult means of transportation, it was decided to divide the Wellwood area into three parts — Wellwood, Brucefield and Hazelgrove. In 1894 the Wellwood school with its big bell was moved to SE 3-13-14, the farm of Lyle Humeston, in Langford Municipality. The school received grants from both the Langford and North Cypress Municipalities as the pupils came from both areas. I was fortunate in finding some old registers dating from 1894-1905 and also the minute book with expenses etc. in it for the years from 1894-1916. The minutes were extremely brief and not very informative.

In those early days it was customary for older pupils to stay home and work in the summer and go to school in the winter. Their ages ranged 5 to 20 years during the winters.

In 1917 the old Wellwood School closed and consolidated with the other two schools when the new Wellwood Consolidated School was built in the village. In October 1917 Auctioneer John Balfour of Carberry sold the old school buildings in the district. John Caithness bought the Wellwood School for \$90 and James Irvine paid \$97 for the shed. Eventually, in the late 1930's, Mervyn Graham purchased the schoolhouse and had it moved to his farm across the road. It was mounted on skids and pulled by Gilbert A. Graham's steamer and



*Beautiful Plains School Division #31, Office in 1989.*

some horses to the farmyard where it was used as a granary for many years and then destroyed.

The bell from the old school became a part of the new Wellwood Consolidated School in 1917. After the school was closed and demolished in 1979, a cairn with the bell on top of it was erected on the site.

Some of the trustees of old Wellwood School were: Andrew Thomson, William Caithness, Thos. McGregor, John Thomson, Thos. Munn, John and Lyle Caithness, John Gibson, John Newton, J. Russell Johnstone, James Irwin, W.H. Orr, George Graham, Thos. G. Lowe, Philip McCrae, W.A. Mackie and probably others of whom I have not mentioned.

As far as I can find out, the secretary-treasurers were: Andrew Thomson (1894-1903), J.W. Newton (1903-1911), Thos. G. Lowe (1911-1917). Their salaries ranged from \$10 to \$15 a year.

The dates of the Teacher's Conventions varied from mid-September to Thanksgiving weekends in October.

#### **Wellwood School Teachers (1894-1917)**

Jean Gunn, Dallas Perry (1894), Dallas Perry, W.T. Lockhart (1895), Edith Robinson (1896), A. Abbott, Helen Youngusband (1897), Stanley O'Brien, Christina Armit (1898), Christina Armit (1899-1901), Wallace Watson, Lizzie Craig, Annie Turner (1902), Annie C. Turner (1903), Edith Creighton (1904), Gertie MacDougall (1905), Bertha Lowry (1906), Kate Gahan (1907), Emily Ducklow (1908-1909, 1st half), Marion Young (1909, 2nd half), Bertha Reid (1910-13), Maurice Miller, Ethel Miller (1914), Ethel Miller (1915), Clara Langseth (1916-June 1917).