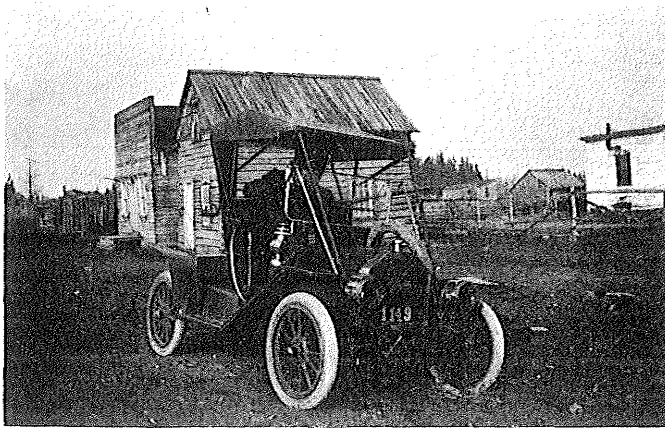


The beautiful bend in the river winding around the homes at "Bakka" and "Odda."

"Osi" - the home of Larus and Gudrun Bjornson. For many years a stopping place for travellers.



1910 - First motor car to come to Riverton with two old buildings in the background. The store is probably one that Siggs Fridsteinson used as a confectionery store. The log house was the home of Mr. and Mrs. Bjorn Sigurdson.

The first motor car to arrive in Riverton, around 1907 or 1908, owned by a commercial traveller. Eyolfson's store and Post Office in the background. The young girl with the blond curls is Helga Olafson (Annason).

