

place Isador had later on. They built a small house near highway #235. They broke up some land, farmed a few years, then went to Indiana, U.S.A. Maria passed away July 10, 1959 at the age of 67 years and is buried at Mishawaka, Indiana.

Remie was born on June 20, 1893. He married Amelie Vandenbosch at Ste. Amelie on September 2, 1916. They moved to Antwerpia that fall. They took a homestead on the S.W. $\frac{1}{4}$ 7-24-13, the same place Isador had later on. They built a small house near highway #235. They broke up some land, farmed a few years, then went to Indiana, U.S.A. Maria passed away July 10, 1959 at the age of 67 years and is buried at Mishawaka, Indiana.

Remie was born on June 20, 1893. He married Amelie Vandenbosch at St. Amelie on September 2, 1916. They moved to Antwerpia that fall. They took a homestead on the S.W. $\frac{1}{4}$ 7-24-13, where they built a house, a barn and lived there until 1928. They broke up some land and started farming. They had five children born there.

Palmira — born March 1, 1917. She married Gustave Debeuckelaere in 1938.

Louise — born in 1918, lived two years and is buried at St. Amelie.

Yvonne — born on August 2, 1920 married Gerard Debeuckelaere in 1939.

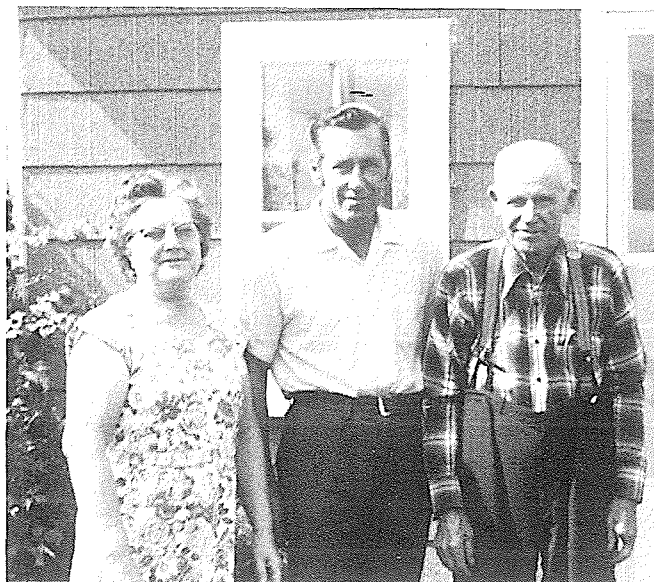
Frank — born on October 16, 1921, married in 1951, has a family of five and lives at Kelowna, British Columbia.

George — Born on November 26, 1924, married Dorothy Bayne on September 6, 1950. They have four children and live at Victoria, British Columbia. Remie and Amelie sold the farm in 1928 to Julien H. Cottyn, a neighbor. They bought the hotel at McCreary. A few years later, they sold it and moved to Ste. Rose. They then bought a farm on the N.E. $\frac{1}{4}$ 30-23-14. After a few years they sold it to their son in law Gerard Debeuckelaere and they moved to St. Boniface, Manitoba, where they lived until Remie passed away on January 4, 1969 at the age of 75 years and is buried at Ste. Rose. Amelie then came back to Ste. Rose where she lived in the Leisure Apts. until she passed away in the spring of 1982.

Camiel was born on November 20, 1894 and passed away on April 7, 1896.

Eliza was born on July 14, 1897. She married Baudewin Callewaert in Ste. Amelie on April 15, 1915. They moved to the United States soon after. They had a family of ten. Eliza passed away on March 5, 1973 at the age of 75 years and is buried at Sturtwant, Wisconsin.

I, Theophile (Phile) was born on January 19, 1901. I got part of my schooling in Belgium, coming to Canada the same year as my family, three brothers



Margaret, Cyril, and Phile Petillion, 1975.

and four sisters, in 1913. We were about eight days or more on the boat. I was never so glad to see land as when we landed. After living in St. Boniface about a month, we came to Makinak by train, then by horses and wagon to Ste. Amelie. My mother got her education in Belgium. My Dad had to work for farmers when he was young so he had no education. When he was older he went to the brick yard each summer, twelve miles away from his home in France. They made bricks by hand and he crippled his two little fingers there while working. His wife worked there also after they got married, until their eldest child Mathilda was born. My mother stayed home and ran a bar selling beer for about 2 cents per glass. (10 centime Belgium money or one tenth of a franc). They then bought a ten acre farm with four head of cattle and two pigs. They put in a crop of rye and oats and cut and threshed it all by hand. Dad always worked the hard way with an axe and shovel. He never drove a team of horses. My mother always drove when they went visiting. Dad and I went brushing land part time in the summer for Mr. Yonkman at Ste. Amelie. I came to Antwerpia with the family. I took a homestead in 1921 on S.W. $\frac{1}{4}$ 17-24-13. I rode a bicycle forty five miles to Dauphin to apply for my homestead and again three years later to get my patent. I broke about forty acres on it, the rest was hayland and some bush. In 1919 we bought a Case steam engine and saw mill from August Seons (it was just north of where Wilkinson's Store was at Bacon Ridge). We moved it to Remies' place where we sawed lumber for ourselves and our neighbors. Money was not too plentiful in those days. After Remie sold his place to Mr. Cottyn we moved the mill to Dads' place. We used the engine to break up land