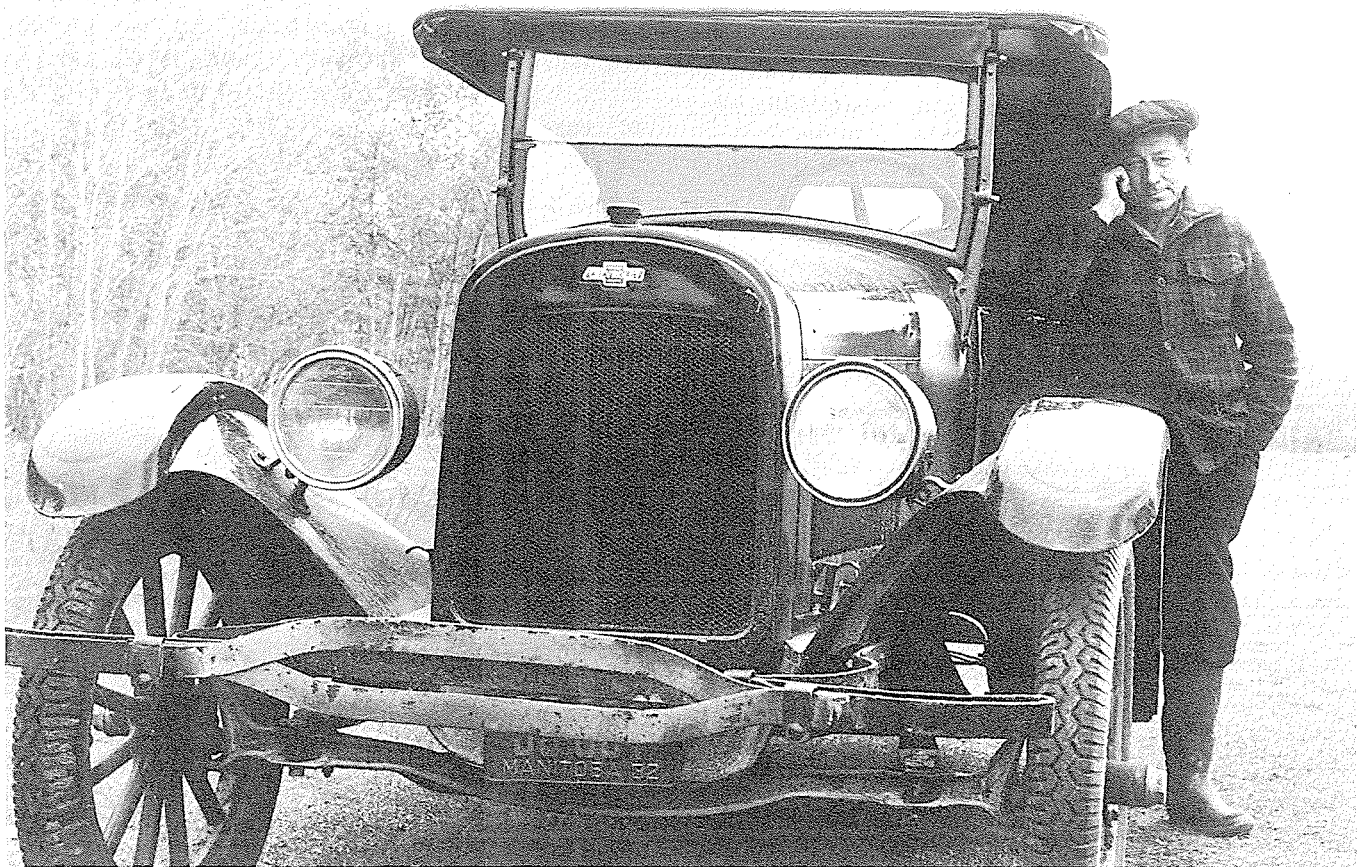


# The Eddystone District



Emile Spence with Joseph Johnson's 1923 Chevrolet. Starred in film, "Of Many People", filmed by National Film Board for Manitoba's Centennial, 1970.

## **Eddystone** by **Thelma Taylor**

Eddystone is a thriving community situated about twenty miles east of Ste. Rose along highway 235. It was named after the Eddystone lighthouse in England.

Most of the land was homesteaded by veterans after the first World War. They soon learned, the hard way, that the land was too light and too stony for farming. Those who persevered have done well by

raising cattle. After testing the soil, it was found that with the use of fertilizer, tame hay and some grain crops can be raised.

Eddystone is unique in that it is a close knit community. We have one of the largest Sports Days in Manitoba and can boast of one of the largest hardball entries.

Eddystone is made up of a well-supplied general store and post office, a well-stocked service station, a new community centre, a modern three-sheet curling