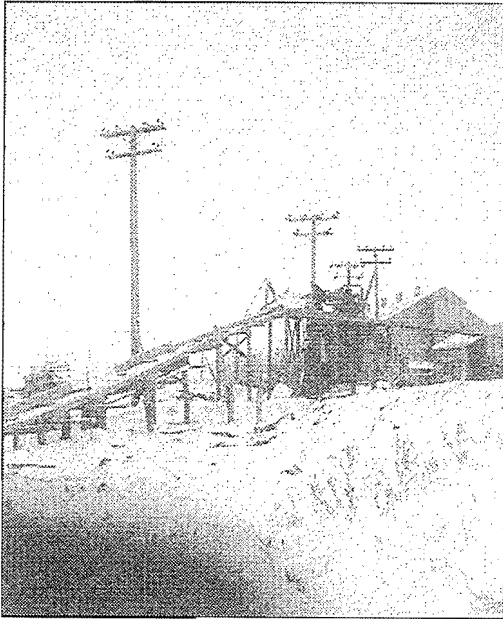


SWAIL ICE COMPANY – Omand’s Creek

Many people know that ice was made at Omand’s Creek by the David Swail Ice Company. Mr. Swail’s daughter Eleanor contributed family photos and an explanation of the ice conveyor system. She notes that the company used only city water for its ice, NOT river water!



Swail Ice Co. Conveyor System
Photos: Eleanor Swail Dines

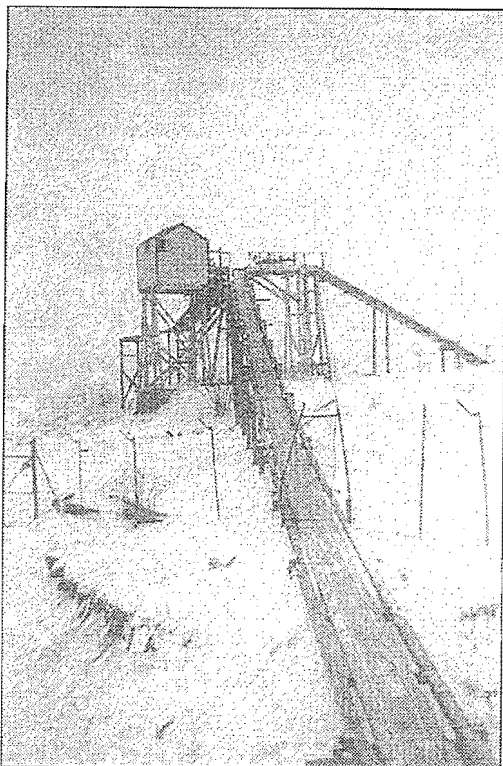
Upper Left:

Ice Slide on south side of Portage Avenue.

The ice slides down and under the bridge over Omand’s Creek.
The ice pond is the present site of the baseball diamond.

Lower Left:

Conveyor belt picks up blocks of ice on north side of Portage Avenue and then shunts them over to one of the two ice houses (present site of Rae & Jerry’s).



Below:

David Swail Ice Wagon, 1930s
“Made from City Water”.

