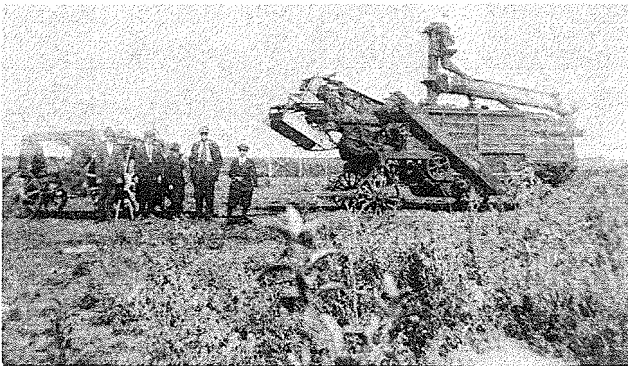




Rudy and Herbie Metner sawing wood after school.



The Julius Buechler threshing machine which operated in Bayton.

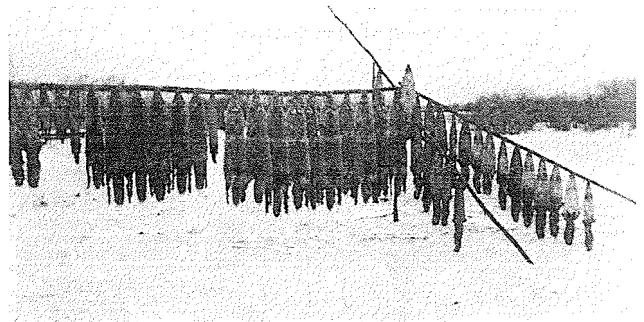


1928. The loggers Rudy Metner and Albert Schedler move out of camp east of Spearhill.

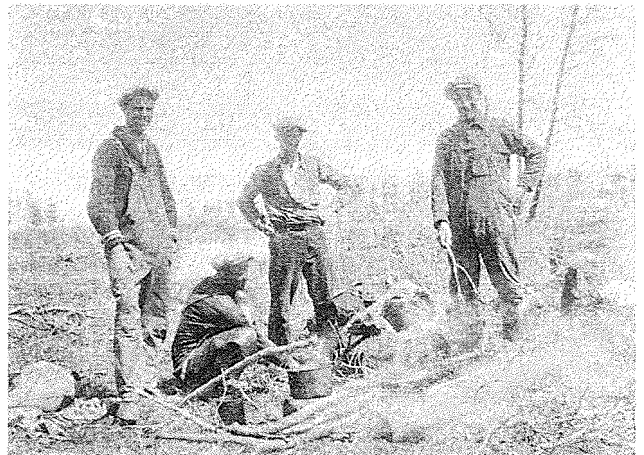
In the fall, when I was alone on the farm, the rest having gone to Winnipeg for a few days, I would take the row boat some distance out on the lake, and just sit there listening to the gulls, ducks and loons making



Lunch in camp. The Metner boys and the Buechler boys.



These skunk, mink and fox furs were caught by the Metner boys around Masnick's Lake.



Making lunch on the trail from Birch Lake.



Albert Schedler and Rudy Metner at Cordwood Camp 14 miles east of Spearhill.