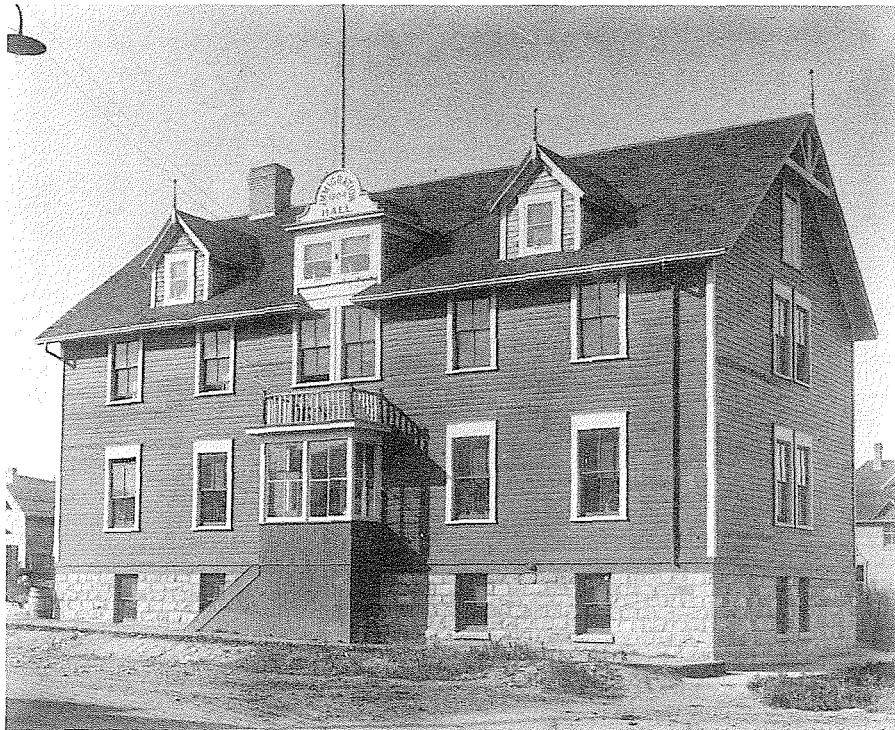




The diesel horn announced the arrival of a new era in railroading. With the passing of the steam locomotive went the romance of the opening of the West. People

of the present generation have no nostalgic recollection of the wail of the train in the dead of night. To the homesteader it was comforting to know that other human beings were on their way to help relieve the loneliness of prairie life.

The first diesel came to Brandon on January 12, 1950.



This Immigration Hall, first constructed in 1904 on Pacific at Twelfth, served in several capacities besides that of a temporary home for early immigrants. During the 1918 flu epidemic, it was used as an infirmary. In the Thirties it was a hostel for hundreds of unemployed who travelled across the country seeking jobs. It finally served as a storage shed for farm implements.

When it was moved to Fifth and Pacific in 1906, the foundation stones were numbered to be used again as the foundation in the new location.